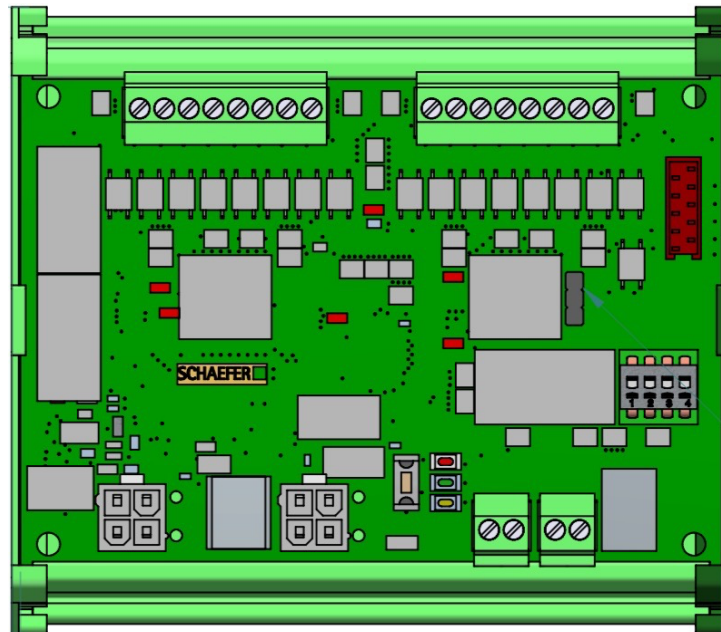


flexyPage Displays

CAN-IO Board 16 I/O

(common cathode or anode)

Mechanical Drawings + Datasheet



About flexyPage documentation



This document provides an overview of possibilities of what can be realised with the flexyPage system. It constitutes only a small part of the whole documentation and is undergoing continual improvement.

The documents, images, graphics and videos, as well as hard and software are protected by copyright. It is prohibited to copy or circulate this document without prior written consent. Translations do also require a written declaration of consent. The ELFIN GmbH Technology is sole contact regarding copies, translations and similar concerns.

This documentation is continuously revised and updated with the greatest of care. Nevertheless, errors cannot be excluded. We are pleased to hear your comments, helpful references and suggestions about this documentation. Please contact our sales department or support for that.

The ELFIN GmbH Technology will not accept any liability for errors or any potential damage and their consequences in conjunction with delivery or usage of this document.

Please carefully read the user manuals, product data sheets, safety instructions and mounting instructions before using!



The actual user manual as well as other documents and application cases can be found at the product website:

Introduction to the flexyPage system

Quick starting guide

Video tutorials

flexyPage user manual

Widget descriptions

Product data sheets

Frequently asked questions

Sales contact

Support contact

Manufacture homepage

flexypage.de/en/documentation

flexypage.de/en/documentation

flexypage.de/en/tags/video-tutorials

flexypage.de/en/documentation

flexypage.de/en/doc/widget-descriptions

flexypage.de/en/documentation

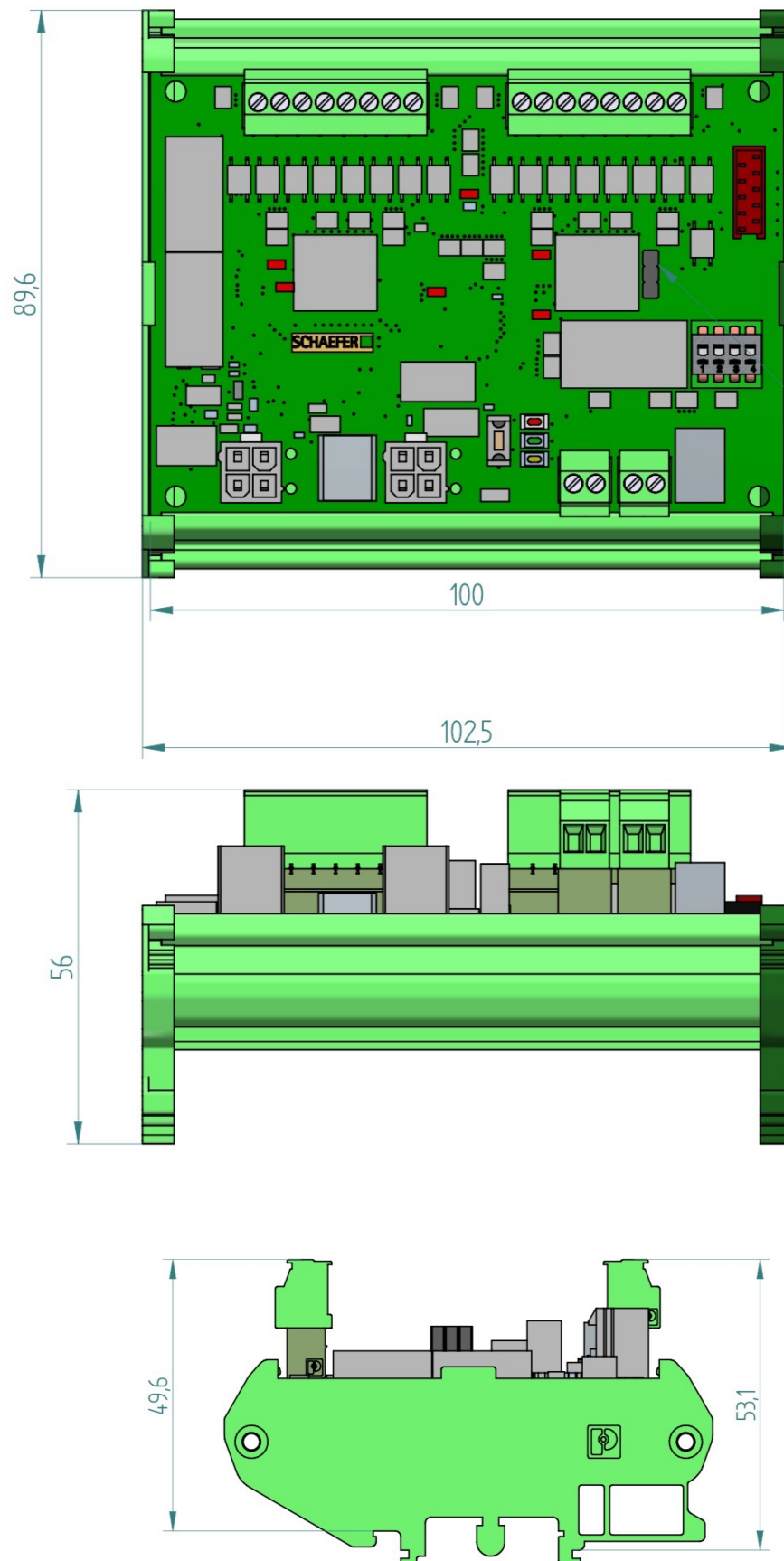
flexypage.de/en/faq

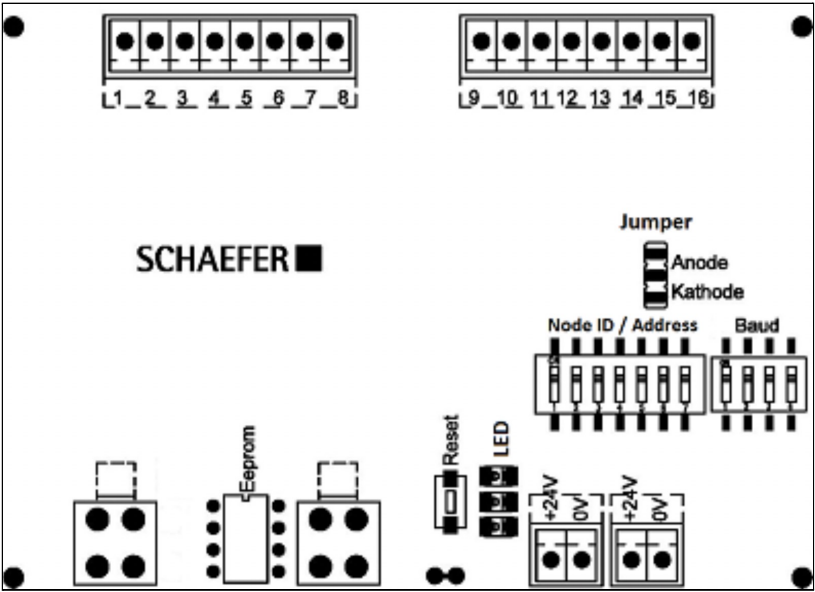
flexypage.de/en/sales

flexypage.de/en/support

elfin.de

Dimensions CAN-IO Board 16 I/O pos.+neg. Logik





Overview	
Supply voltage	18 ... 30 VDC smoothed
Power consumption	50 mA
Output Voltage	Max. 300 mA per output, 800 mA total
Polarity	Common cathode/anode
Temperature	0°C - 70°C

LEDs				
color	function	off	on	blink
red	Error	OK	Error	Error
green	Operational	-	OK	Preperational
yellow	Memory	OK	-	Storing data

DIP Node ID (binary)							
DIP Label (bit)	1	2	3	4	5	6	7
Examples							
Node ID 16:	OFF	OFF	OFF	OFF	ON	OFF	OFF
Node ID 17:	ON	OFF	OFF	OFF	ON	OFF	OFF
Node ID 18:	OFF	ON	OFF	OFF	ON	OFF	OFF
Node ID 19:	ON	ON	OFF	OFF	ON	OFF	OFF

DIP baud rate				
	1	2	3	4
auto	OFF	OFF	OFF	OFF
20 kbd	ON	OFF	OFF	OFF
50 kbd	OFF	ON	OFF	OFF
125 kbd	ON	ON	OFF	OFF
250 kbd	OFF	OFF	ON	OFF

Wire color code		
Pin/Wire	Description	Color
1	CAN-High	white
2	CAN-Low	blue
3	GND	black
4	V+	red

Accessory parts

cio-cn16-r120 - resistor for CAN-bus termination for CAN-IO-16

cio-cn16-asl2 - bus cable for CAN-IO board 16 I/O length: 2 m

Document history

Version	Release Date	Changes
1.0	2020-04-16	Initial release
1.1	2021-03-05	New company name
1.2	2022-03-18	New address

Your contact persons at ELFIN

Even an extensive documentation cannot answer every question. Do you still have questions or suggestions concerning our flexyPage system? We look forward to your requests! Please don't hesitate to contact us at:

ELFIN Technology GmbH

Im Zollhafen 22
50679 Cologne
Germany
Phone: +49 (221) 6778932-0
FAX: +49 (221) 6778932-2
service@elfin.de
www.elfin.de



Sales flexyPage

flexypage.de/en/sales
Phone: +49 (221) 6430816-2
FAX: +49 (221) 6778932-2
sales@flexypage.de



innovative display solutions

Support flexyPage

flexypage.de/en/support
Phone: +49 (221) 6430816-3
support@flexypage.de