

flexyPage Displays

LT-Line 38 (94,0 cm)

Model: 2019 24V

Mechanical Drawings



About flexyPage documentation



This document provides an overview of possibilities of what can be realised with the flexyPage system. It constitutes only a small part of the whole documentation and is undergoing continual improvement.

The documents, images, graphics and videos, as well as hard and software are protected by copyright. It is prohibited to copy or circulate this document without prior written consent. Translations do also require a written declaration of consent. The ELFIN GmbH is sole contact regarding copies, translations and similar concerns.

This documentation is continuously revised and updated with the greatest of care. Nevertheless, errors cannot be excluded. We are pleased to hear your comments, helpful references and suggestions about this documentation. Please contact our sales department or support for that.

The ELFIN GmbH will not accept any liability for errors or any potential damage and their consequences in conjunction with delivery or usage of this document.

Please carefully read the user manuals, product data sheets, safety instructions and mounting instructions before using!



The actual user manual as well as other documents and application cases can be found at the product website:

Introduction to the flexyPage system

flexypage.de/en/documentation

Quick starting guide

flexypage.de/en/documentation

Video tutorials

flexypage.de/en/tags/video-tutorials

flexyPage user manual

flexypage.de/en/documentation

Widget descriptions

flexypage.de/en/doc/widget-descriptions

Product data sheets

flexypage.de/en/documentation

Frequently asked questions

flexypage.de/en/faq

Sales contact

flexypage.de/en/sales

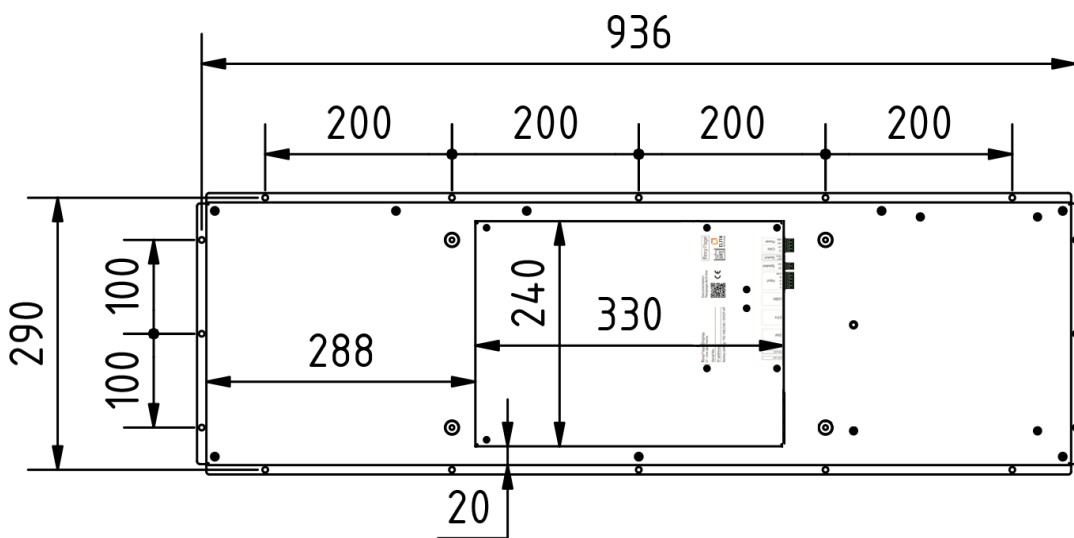
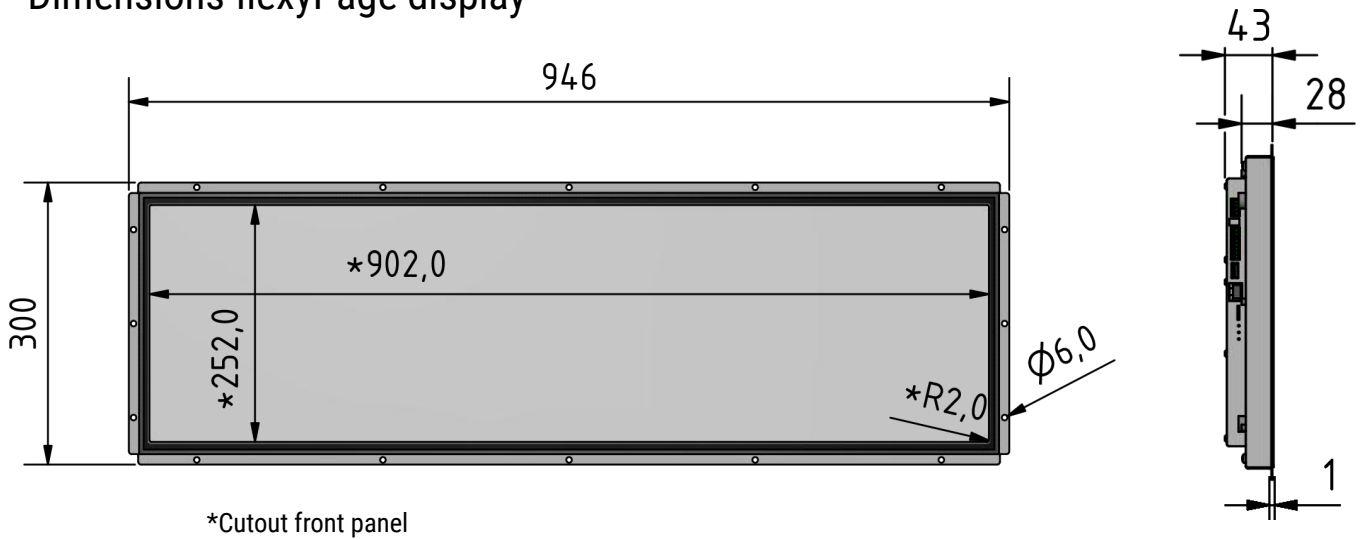
Support contact

flexypage.de/en/support

Manufacture homepage

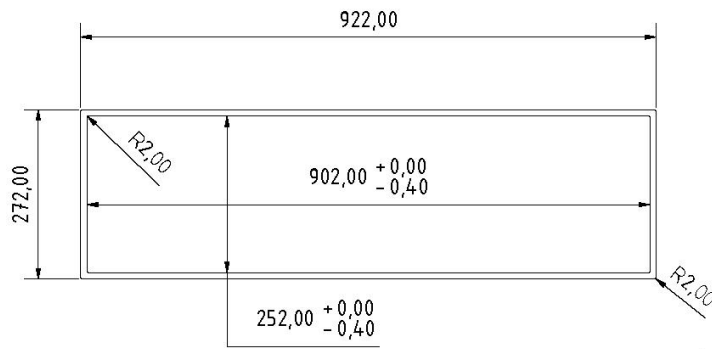
elfin.de

Dimensions flexyPage display



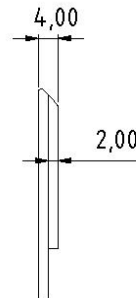
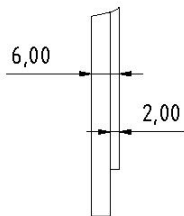
Order No.: fel4B-02A-380A	Title Mechanical drawing LT-Line 38 2019 24V open frame		
subject to modifications	Drawing No.: fel4B-02A-380A_MD_V1.0		
Tolerances +/- 0,1 mm	Scale:	Date: 2019-07-08	Drawn by: VSch

Accessory parts - VSG safety glass panel + acrylic glass panel for 2 mm front panel



VSG safety glass
6 mm for 2 mm front panel

Acrylic glass
4 mm for 2 mm front panel



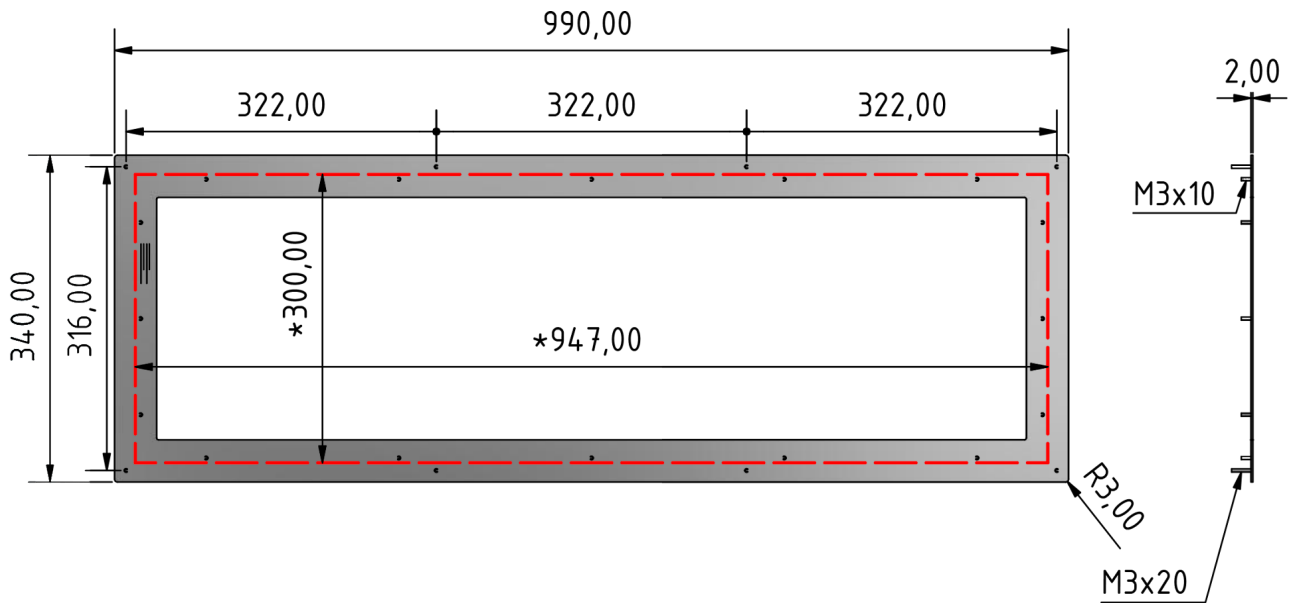
To protect the flexyPage displays we provide different glass panels:

Order No.	Description
zbs1A-02A-380A-SPE	acrylic glass LT-Line 38 (60,9 cm) anti-glare
zbs1A-02A-380A-SGE	VSG safety glass LT-Line 38 (60,9 cm) anti-glare

Order No.: zbs1A-02A-380A-...	Title cover glass for LT-Line 38 open frame		
subject to modifications	Drawing No.: fel4B-02A-380A_cover_glass_V1.0		
Tolerances +/- 0,1 mm	Scale:	Date: 2019-07-08	Drawn by: VSch

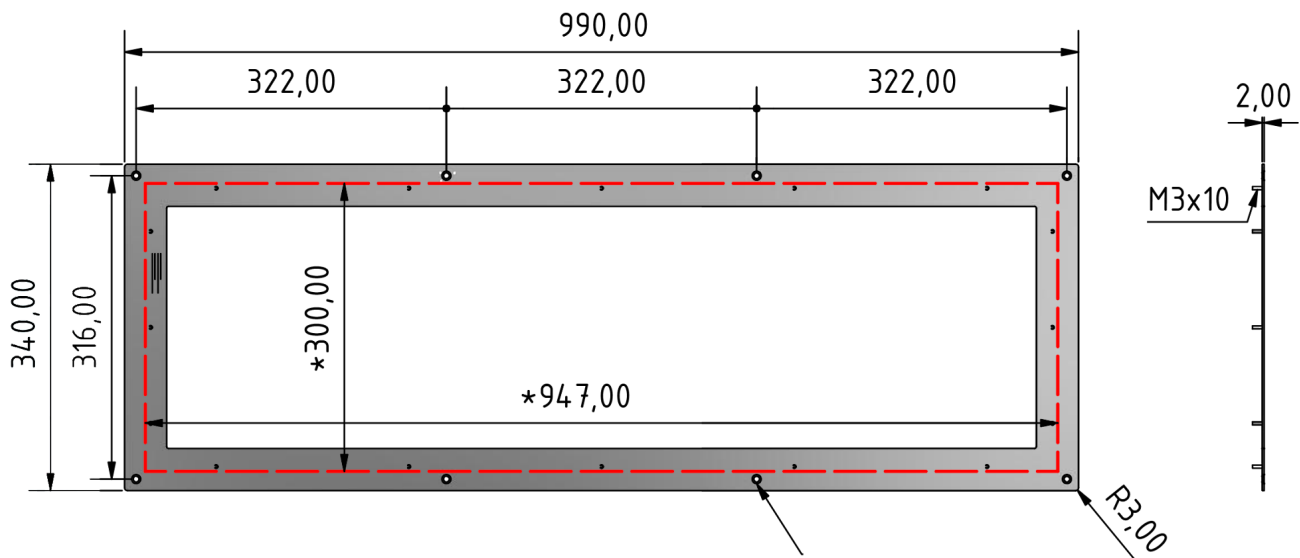
Accessory parts - dimensions stainless steel frame for flexyPage display

stainless steel frame with welding studs M3 x 20 mm



*external dimensions display / monitor

stainless steel frame with countersunk holes M4



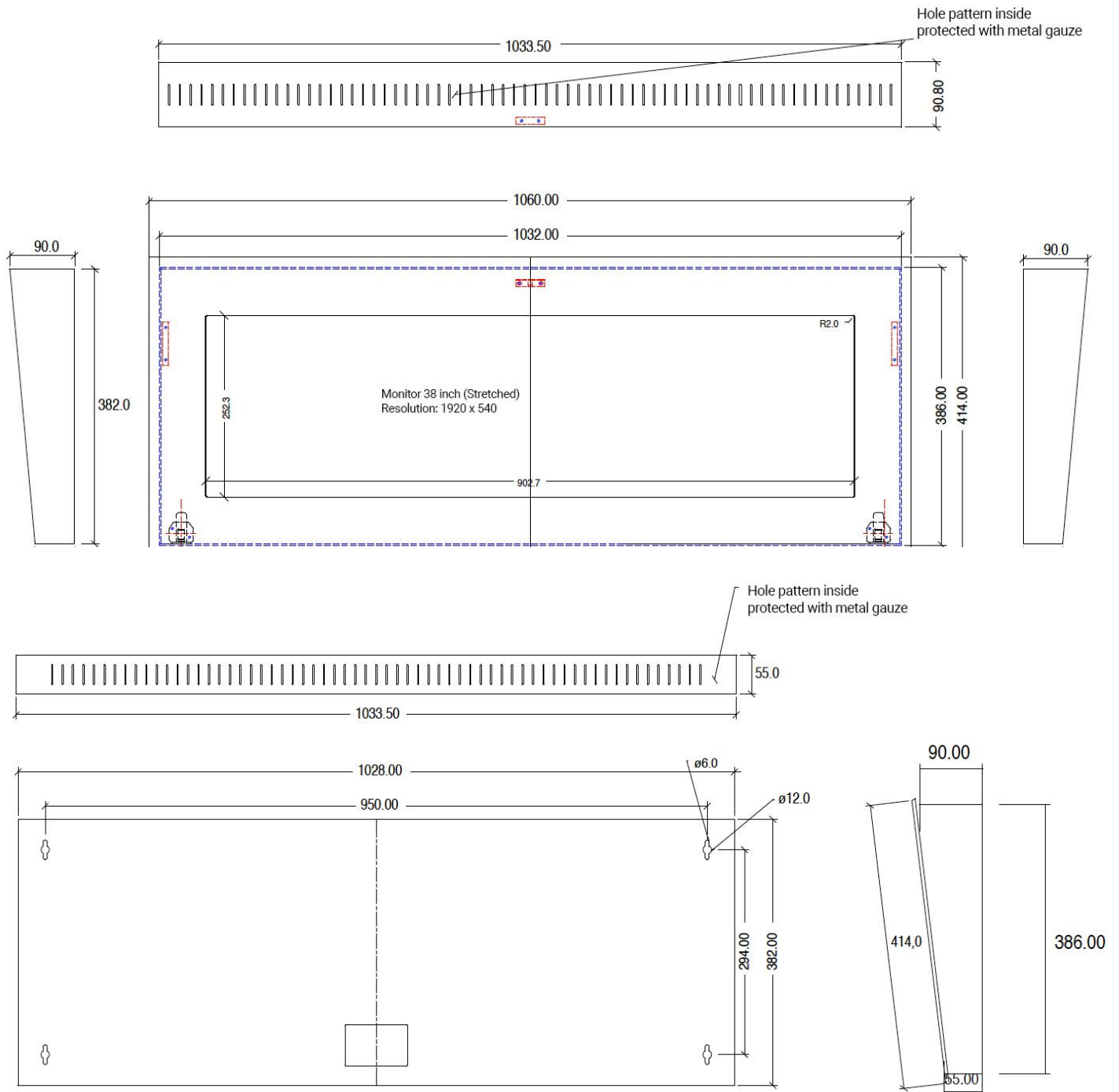
*external dimensions display / monitor

countersunk holes M4

Order No.: welding studs: zbs1A-02A-380A-FEB countersunk holes: zbs1A-02A-380A-FES subject to modifications	Title stainless steel frame for LT-Line 38 open frame		
	Drawing No.: fel4B-02A-380A_stainless-steel-frame_V1.0		
Tolerances +/- 0,1 mm	Scale:	Date: 2019-07-08	Drawn by: VSch

Accessory parts - Wall Mount Housing

Side parts with back wall welded and ground



Order No.: zbs1A-02A-380A-GWMS-15	Title Housing for wall mounting LT-Line 38 inclined		
subject to modifications	Drawing No.: zbs1A-02A-380A-GWMS-15_V1.0		
Tolerances +/- 0,1 mm	Scale:	Date: 2019-07-08	Drawn by: VSch

Document history

Version	Release Date	Changes
0.9	2017-10-12	Pre version
0.91	2017-11-02	Typo
0.92	2018-12-12	Housing for wall mounting inclined added
1.0	2019-02-26	New mechanical drawings
1.1	2019-12-04	Typo
1.2	2021-02-18	New glass drawings
1.3	2022-03	New address

Your contact at ELFIN

Even an extensive documentation cannot answer every question. Do you still have questions or suggestions concerning our flexyPage system? We look forward to your requests! Please don't hesitate to contact us at:

ELFIN Technology GmbH

Im Zollhafen 22
50678 Cologne
Germany
Phone: +49 (221) 6778932-0
FAX: +49 (221) 6778932-2
service@elfin.de
www.elfin.de



Sales flexyPage

flexypage.de/en/sales
Phone: +49 (221) 6430816-2
FAX: +49 (221) 6778932-2
sales@flexyPage.de



innovative display solutions

Support flexyPage

flexypage.de/en/support
Phone: +49 (221) 6430816-3
support@flexyPage.de